

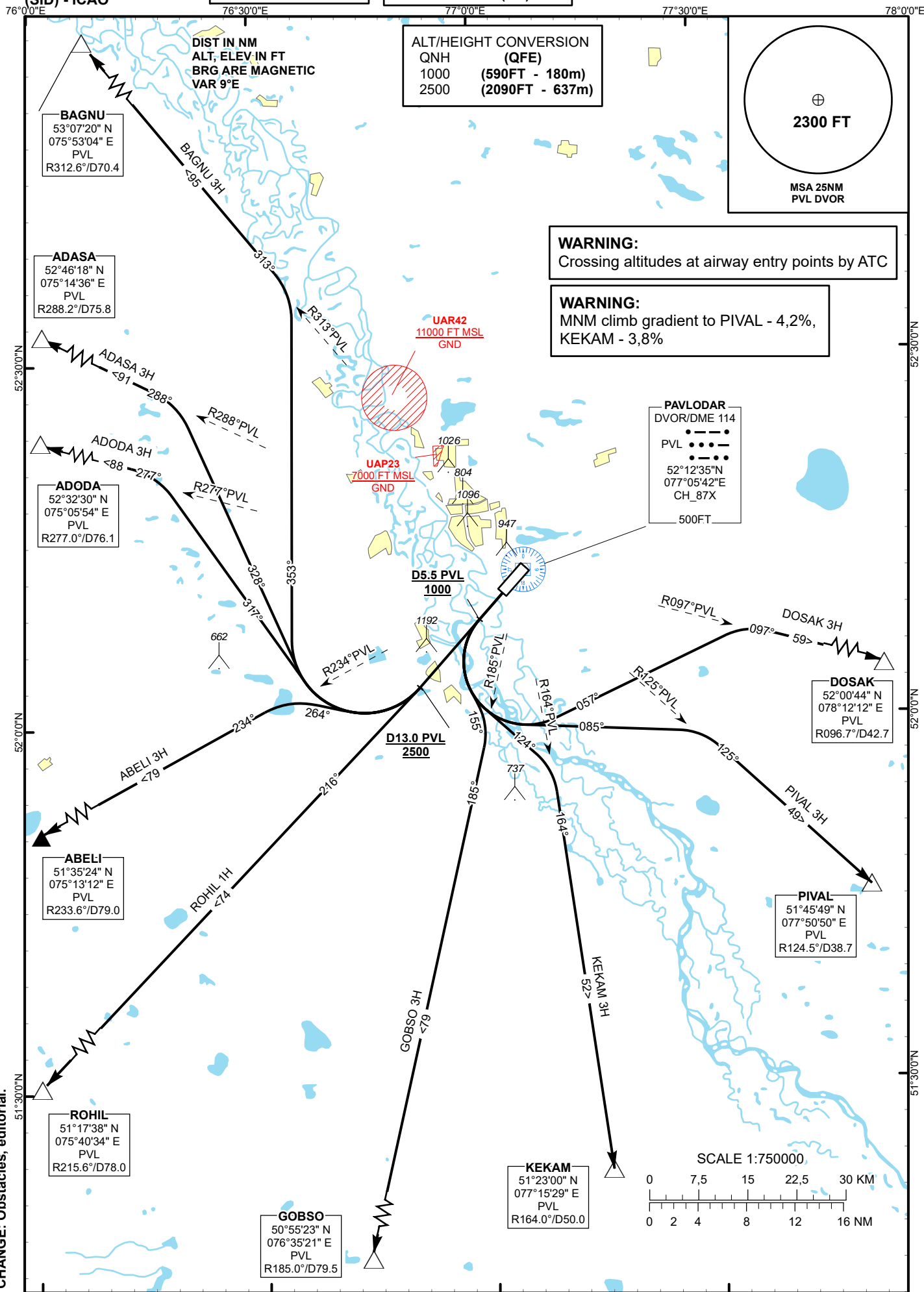
STANDARD DEPARTURE
CHART - INSTRUMENT
(SID) - ICAO

TRANSITION ALTITUDE
10000 ft

PAVLODAR TOWER 119.8
PAVLODAR ATIS (EN) 134.6
PAVLODAR ATIS (RU) 133.6

ABELI 3H, ADASA 3H, ADODA 3H,
BAGNU 3H, DOSAK 3H, GOBSO 3H,
KEKAM 3H, PIVAL 3H, ROHIL 1H

PAVLODAR
RWY 21



CHANGE: Obstacles, editorial.

| Standard Departure Routes - Instrument (SID) Pavlodar RWY 21 |
|---|
| DOSAK 3H After take-off climb straight ahead to 1000 FT or above. At 5.5 NM PVL, turn LEFT on track 057° until intercept R097°PVL, then proceed on track 097° to DOSAK (R096.7° D42.7NM PVL). |
| PIVAL 3H After take-off climb straight ahead to 1000 FT or above. At 5.5 NM PVL, turn LEFT on track 085° until intercept R125°PVL, then proceed on track 125° to PIVAL (R124.5° D38.7NM PVL). |
| KEKAM 3H After take-off climb straight ahead to 1000 FT or above. At 5.5 NM PVL, turn LEFT on track 124° until intercept R164°PVL, then proceed on track 164° to KEKAM (R164.0° D50.0NM PVL). |
| GOBSO 3H After take-off climb straight ahead to 1000 FT or above. At 5.5 NM PVL, turn LEFT on track 155° until intercept R185°PVL, then proceed on track 185° to GOBSO (R185.0° D79.5NM PVL). |
| ROHIL 1H After take-off climb straight ahead to 2500 FT or above. At 13.0 NM PVL proceed on track 216° to ROHIL (R215.6° D78.0NM PVL). |
| ABELI 3H After take-off climb straight ahead to 2500 FT or above. At 13.0 NM PVL, turn RIGHT on track 264° until intercept R234°PVL, then proceed on track 234° to ABELI (R233.6° D79.0NM PVL). |
| ADODA 3H After take-off climb straight ahead to 2500 FT or above. At 13.0 NM PVL, turn RIGHT on track 317° until intercept R277°PVL, then proceed on track 277° to ADODA (R277.0°D76.1NM PVL). |
| ADASA 3H After take-off climb straight ahead to 2500 FT or above. At 13.0 NM PVL, turn RIGHT on track 328° until intercept R288°PVL, then proceed on track 288° to ADASA (R288.2°D75.8NM PVL). |
| BAGNU 3H After take-off climb straight ahead to 2500 FT or above. At 13.0 NM PVL, turn RIGHT on track 353° until intercept R313°PVL, then proceed on track 313° to BAGNU (R312.6°D70.4NM PVL). |